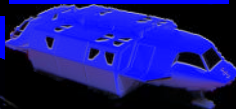
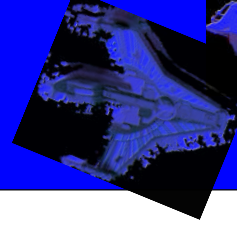
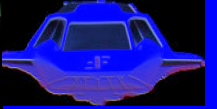


# SMT

SCALEMODELTECHNOLOGIES.COM



## K'Harza Class

For any questions or concerns please contact us by:  
Email: [info@scalemodeltechnologies.com](mailto:info@scalemodeltechnologies.com).  
Website: [www.scalemodeltechnologies.com](http://www.scalemodeltechnologies.com)



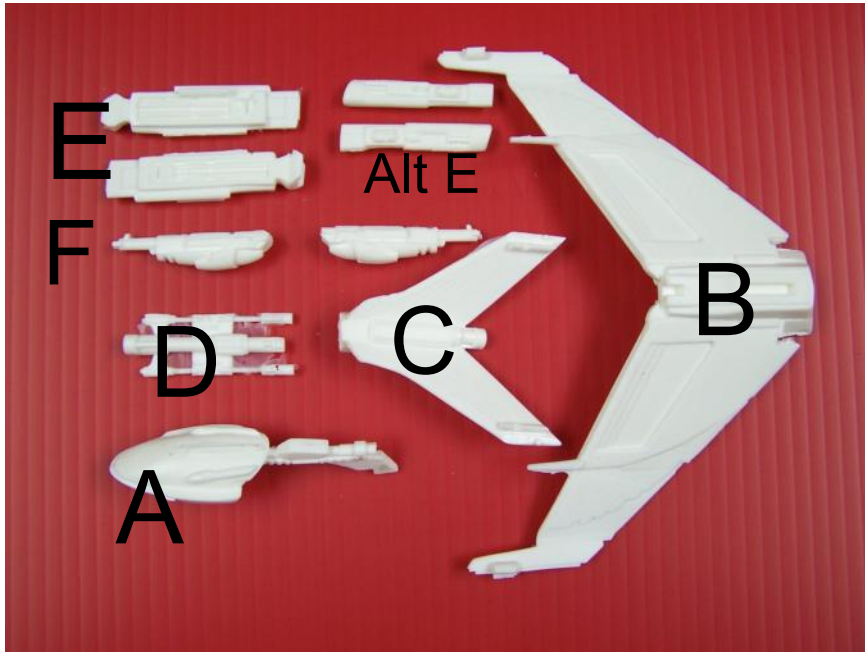
# SMT

SCALE MODEL TECHNOLOGIES

# K'Harza

## Parts List:

You should have 10 parts. 2 laser cannons, 2 engines, 2 alternative engines, 1 head/neck, 1 lower body cannon mount, 1 underside neck detail and the main body.



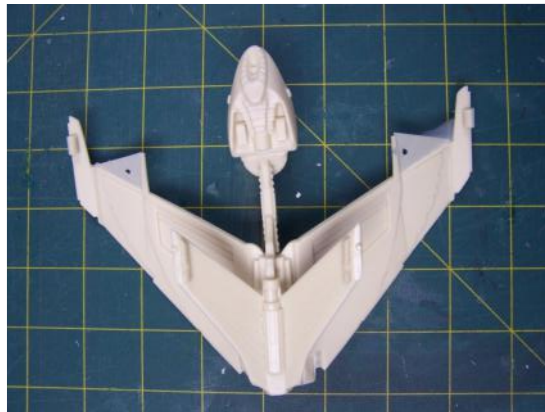
## Step 1.

Locate part 'A' (head/neck) and part 'B' (body). The neck is cemented to the main body by aligning the slot in the upper neck to the wing space between the baffle plates. Make certain you have the wing and neck orientated as shown.



### Step 2.

Locate part 'C' and 'B' which should have the head/neck attached. Cement Part 'C' to the underside of the D' Harza body, paying attention to the orientation. The wings should point forward and down similar to the main body. See photo.



### Step 3.

Locate part 'D' and 'B' which should have the head/neck attached. Cement Part 'D' to the underside of the D' Harza body, paying attention to the orientation. The two spike ends will match up to two flat spots on the underside of the head. See photo.



#### Step 4. (2x)

Locate part 'E' and 'C' which should now have the laser cannons cemented in place. Cement parts "E" to the upper wing, paying attention to the orientation (see photo). There is a smaller alternative set of engines for this step (Alt E). Your choice!



#### Step 5. (2x)

Locate parts 'F' and 'C' which should now be the body, neck/head and lower wings as one piece cemented together.

Parts 'F' are cemented to the small lower wing, paying attention to the orientation. The cannons have a small tab to help with alignment (see photo).



Painting.

There is no set paint scheme for the model. So use your imagination and make it your own.

Decals are not included.

K  
L  
I  
N  
G  
I  
O  
N  
S  
A  
R  
M  
Y



## K'Harza Class Battlecruiser

"This alliance, forged on blood and honor, will last long after the Terrans and their puppet races are only remembered in children's stories." So said Khath, leader of the House of Duras when the Klingon/Romulan Alliance was formed in the late 23rd century. The true alliance, based on an uneasy foundation of mutual ambition and suspicion, lasted less than two decades. It was nevertheless an epochal change, one which would remap the Alpha Quadrant; soon the Romulan Vas Hatham seal would be stamped on a thousand worlds - with Klingon warp drives as the cause.

After decades of use, the Klingon Klolode Class was becoming obsolete. The Klingon High Council decided to invest vast resources in the construction of the K'T'inga Class. As construction was well underway, the Romulans requested technology transfers to facilitate construction of their own new generation of cruisers. Once achieved, the Klingons looked anxiously at what the Romulans had wrought. The small scout ship was soon built in vast numbers in Klingon yards as the Bre'el Class. The alliance shattered just as the cruiser-sized design was nearing completion. Working from these plans, the Klingons built their own supplemental cruiser.

The K'Harza (Dragon) Class proved an interesting alternative to the K'T'inga. This ship concentrated its firepower in forward arcs for a hard-hitting role, best-suited for massed frontal attacks. This didn't suit Klingon hit-and-run tactics well, yet the new ship was rugged and useful. It remained in limited use for over thirty years - ironically, mainly employed against the Romulans.